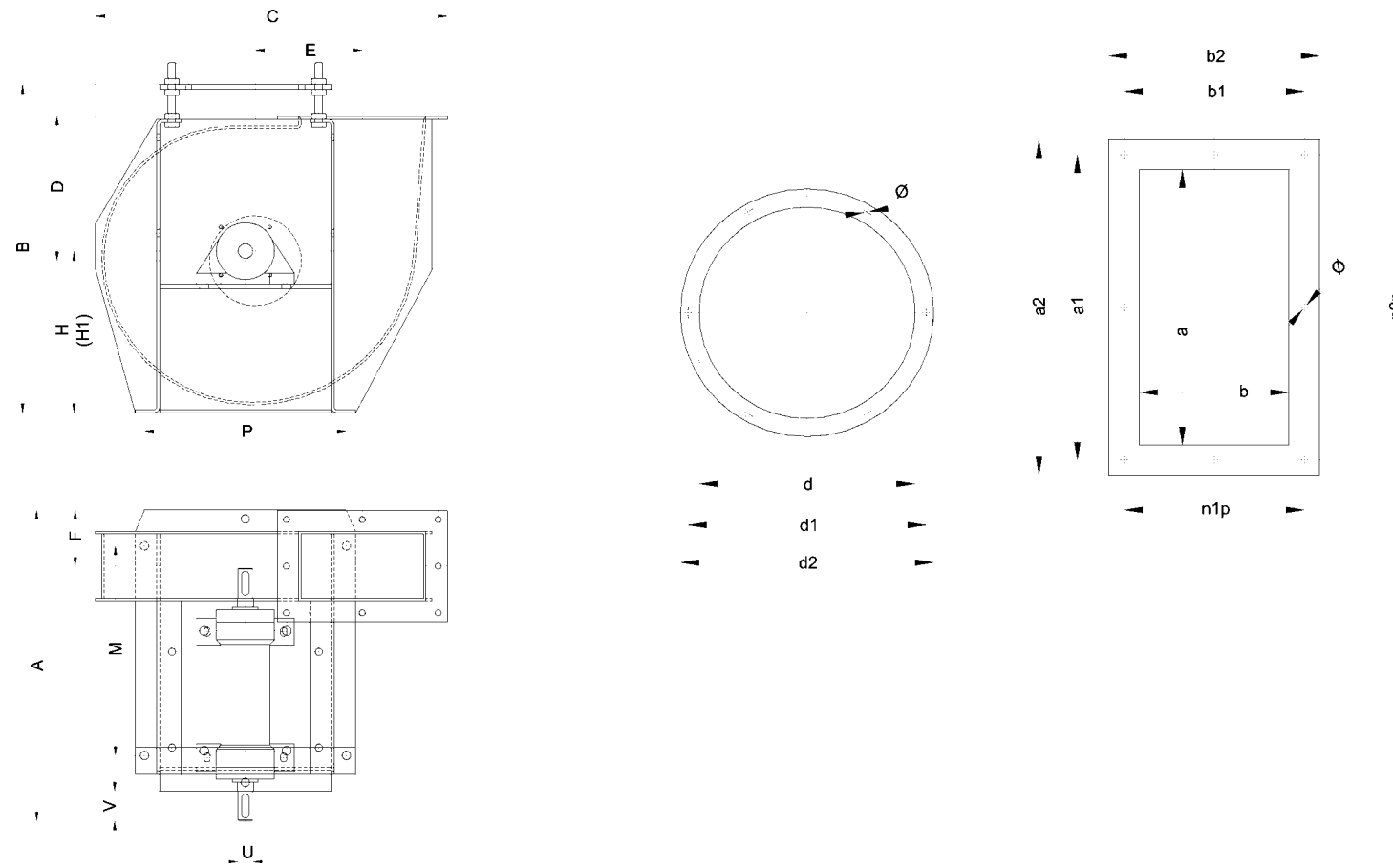


DIMENSIONI D'INGOMBRO SERIE "FH"
OVERALL DIMENSIONS SERIES "FH"

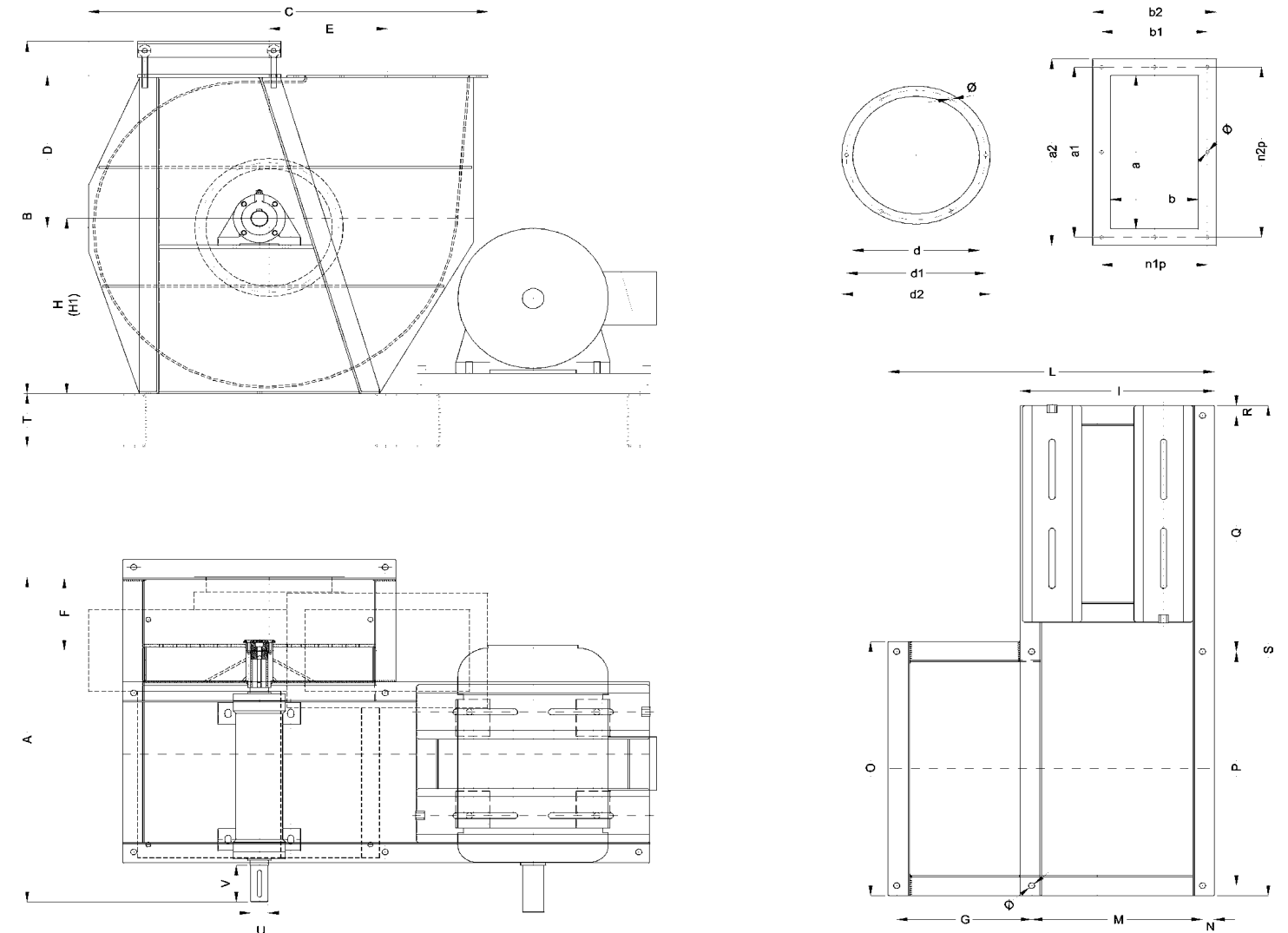
DIMENSIONS D'ENCOMBREMENT SERIE "FH"
GEWICHTE SERIE "FH"



FH 354



FH 564 - 634 - 632 - 714 - 712

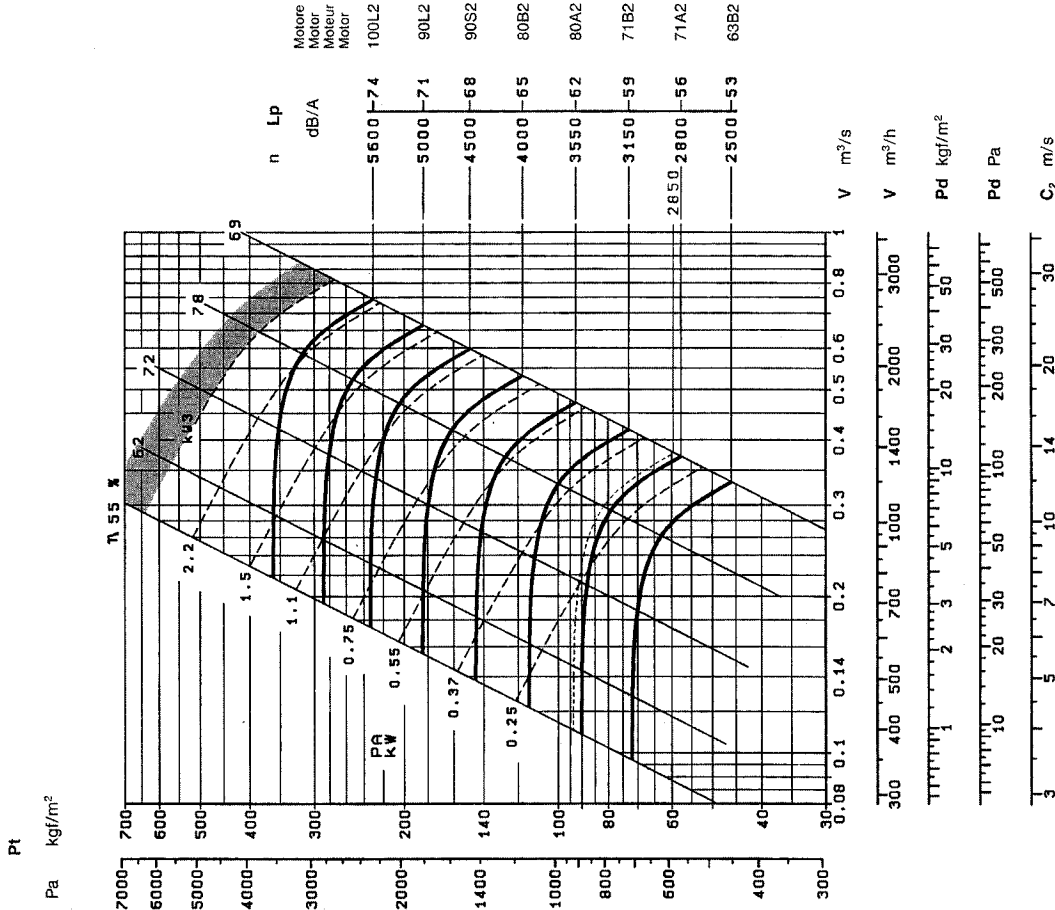


NB. NEI VENTILATORI CON ORIENTAMENTO RD90 SOSTITUIRE H CON H1
PLEASE NOTE THAT FOR FANS WITH HANDING RD90 IT IS NECESSARY TO SUBSTITUTE H WITH H1

TIPO VENTILATORE TYPE VENTILATOR	BASAMENTO BASE FRAME																			ALBERO SHAFT		FLANGIA ASPIRANTE CIRCULAR FLAT FLANGES					FLANGIA PREMENTE RECTANGULAR FLAT FLANGES						PESO WEIGHT kg					
	A	B	C	D	E	F	G	H	H1	I	L	M	N	O	P	Q	R	S	T	Ø	U	V	d	d1	d2	n°	Ø	a	b	a1	b1	a2		b2	n1p	n2p	n°	Ø
FH 354 N1A	519	595	575	225	175	94	-	270	261	-	-	350	-	-	330	-	-	-	-	-	24	50	151	182	161	4	8	208	116	248	156	278	186	2-78	2-124	8	10	110
FH 564 N1A	916	910	949	390	274	190	344	448	410	543	877	477	33	692	632	678	30	1370	160	17	42	110	253	282	307	6	10	385	188	435	238	485	288	2-119	4-108.7	12	12	220
FH 634 N1A	972	1054	1109	456	330	217	377	525	477	543	940	477	33	762	702	708	30	1470	160	17	48	110	353	389	414	8	10	460	188	510	238	560	288	2-119	4-127.5	12	12	280
FH 632 N1A	975	1054	1114	470	330	220	377	525	477	543	940	477	33	762	702	708	30	1470	160	17	48	110	353	389	414	8	10	460	245	510	295	560	345	2-147.5	4-127.5	12	12	300
FH 714 N1A	1088	1226	1307	536	396	230	454	685	600	701	1071	551	39	986	431	842	32	1768	180	19	55	110	404	439	464	8	10	544	222	594	272	644	322	2-136	4-148.5	12	12	370
FH 712 N1A	1108	1294	1393	536	421	250	454	685	600	701	1071	551	39	986	431	842	32	1768	180	19	55	110	454	489	514	10	10	620	310	670	360	720	410	3-120	5-134	16	12	430

Tabella non impegnativa
The above data are unbinding

Tableau sans engagement
Unverbindliche Tabelle

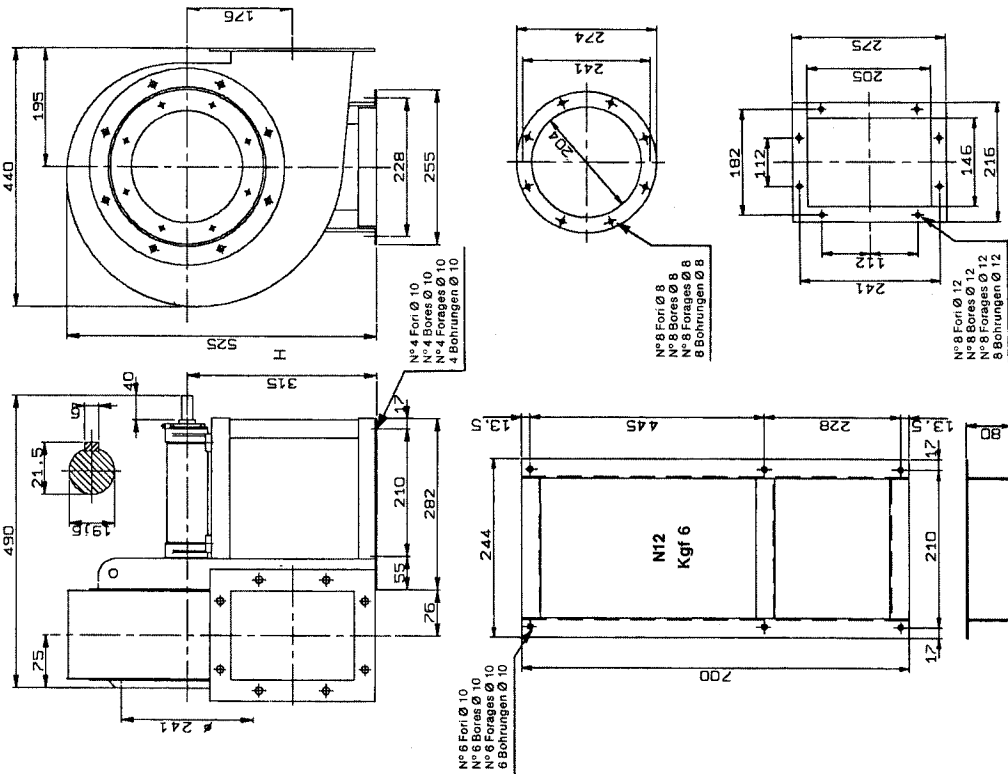


Giri massimi ammissibili:
 Maximum admissible rounds:
 Tours maxima admissibles:
 Drehzahl max:

≤ 100 °C = 5000
 101 ÷ 200 °C = 4500
 201 ÷ 300 °C = 4000

KW assorbiti ventilatore tolleranza ± 3%
 kW consumed fan tolerance ± 3%
 Tolerance sur Pabs kW ± 3%
 Toleranz für Wellenleistung ± 3%

Tolleranza sulla rumorosità + 3 dB
 Noise level tolerance + 3 dB
 Tolerance sur niveau sonore + 3 dB
 Toleranz Schallpegel + 3 dB



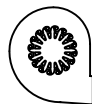
PD² = 0,10 kgf.m²
 GD²

Peso
 Weight
 Poids
 Gewicht = 24 kgf

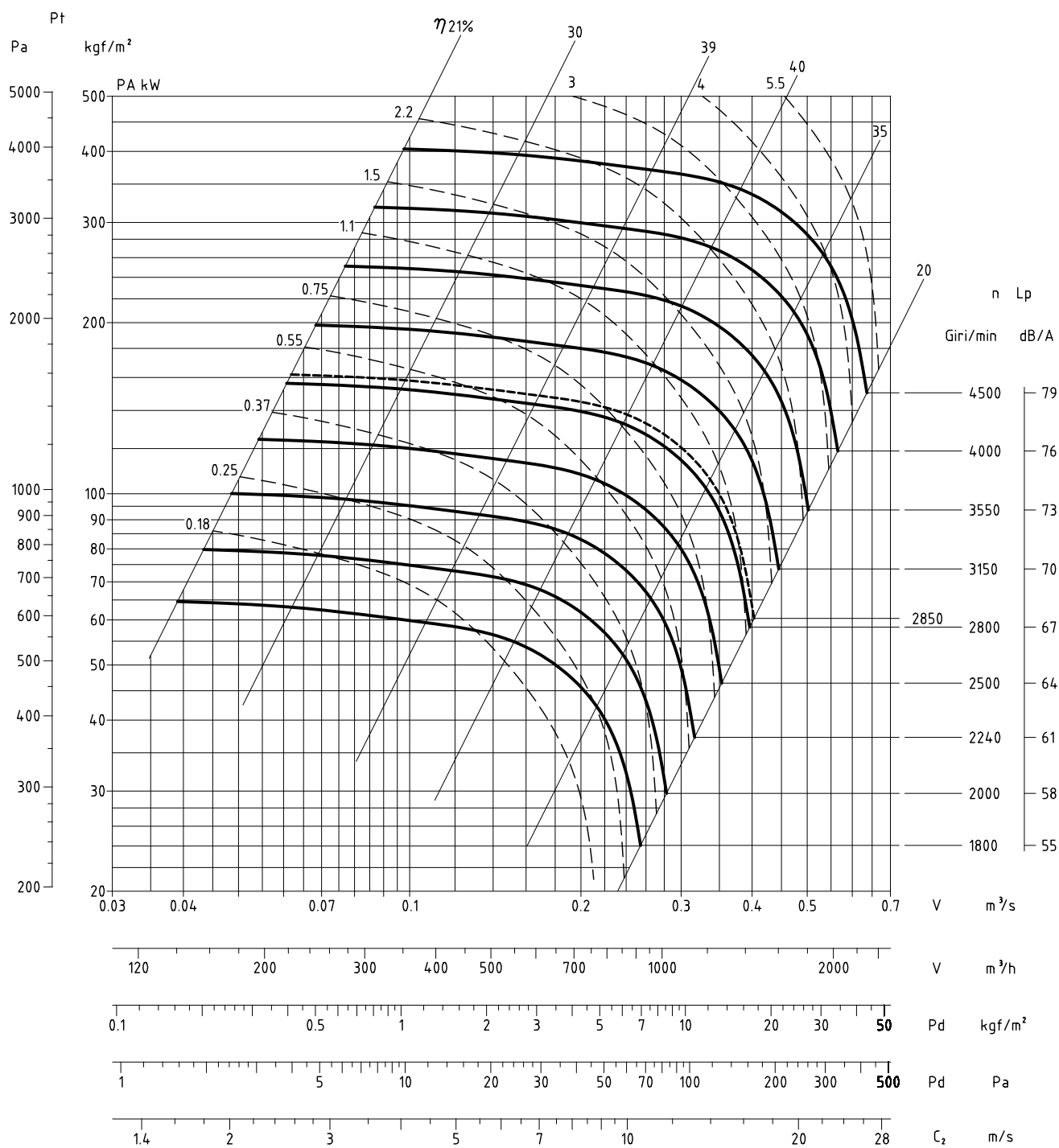
RD	RD 0	RD 45	RD 90	RD 135	RD 180	RD 225	RD 270	RD 315
H	LG 0	LG 45	LG 90	LG 135	LG 180	LG 225	LG 270	LG 315
		315	315	195	195	315	315	315

Il ventilatore è orientabile
 The fan is revolvable
 Le ventilateur est orientable
 Der Ventilator ist drehbar

Tabella non impegnativa
 The above data are unbinding
 Tableau sans engagement
 Unverbindliche Tabelle



Bocca premente 210X115
Bocca aspirante 150

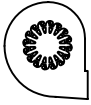


Giri massimi ammissibili $\leq 40^\circ\text{C} = 4000$

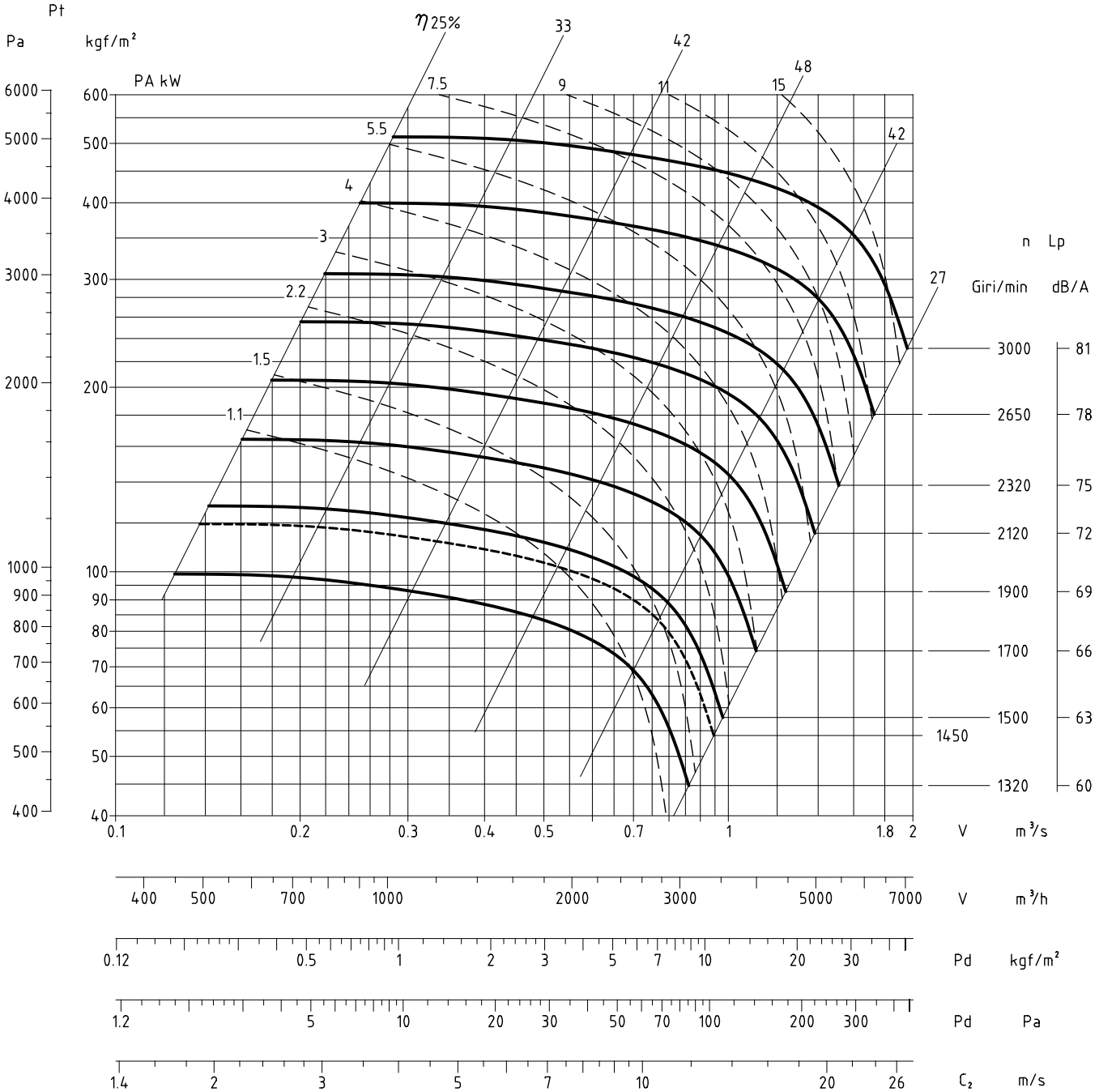
$PD^2 = 0.4 \text{ kgf} \cdot \text{m}^2$

$J = 0.1 \text{ kg} \cdot \text{m}^2$

Densità fluido 1.226 kg/m^3



Bocca premente 385X190
Bocca aspirante 250

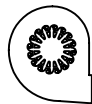


Giri massimi ammissibili

$\leq 40^\circ\text{C} = 2650$ g/min
 $40 + 60^\circ\text{C} =$ g/min

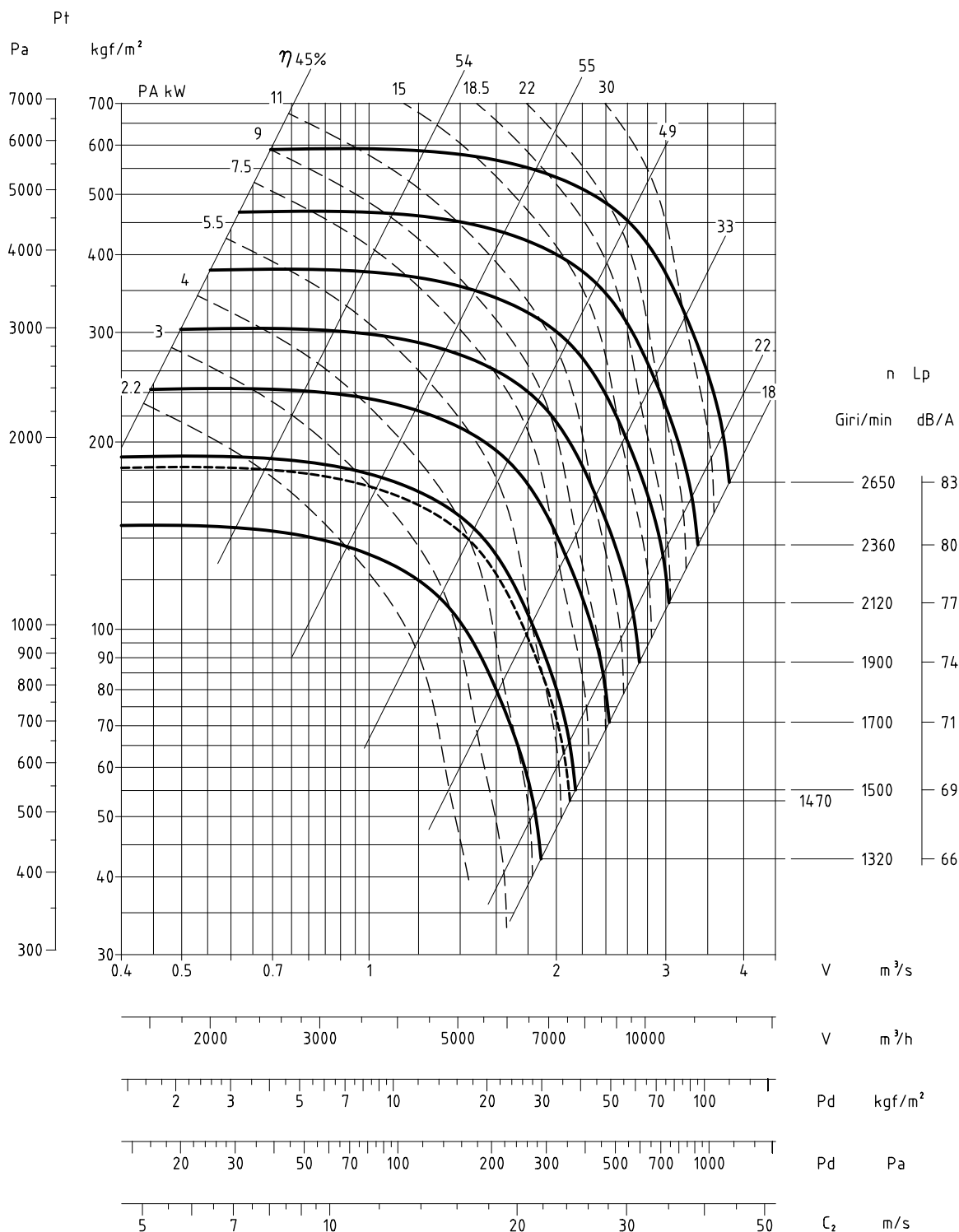
$PD^2 = 5.1$ kgf.m²
 $J = 1.275$ kg.m²

Densità fluido 1.226 kg/m³



Bocca premente
Bocca aspirante

460X190
350

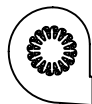


Giri massimi ammissibili

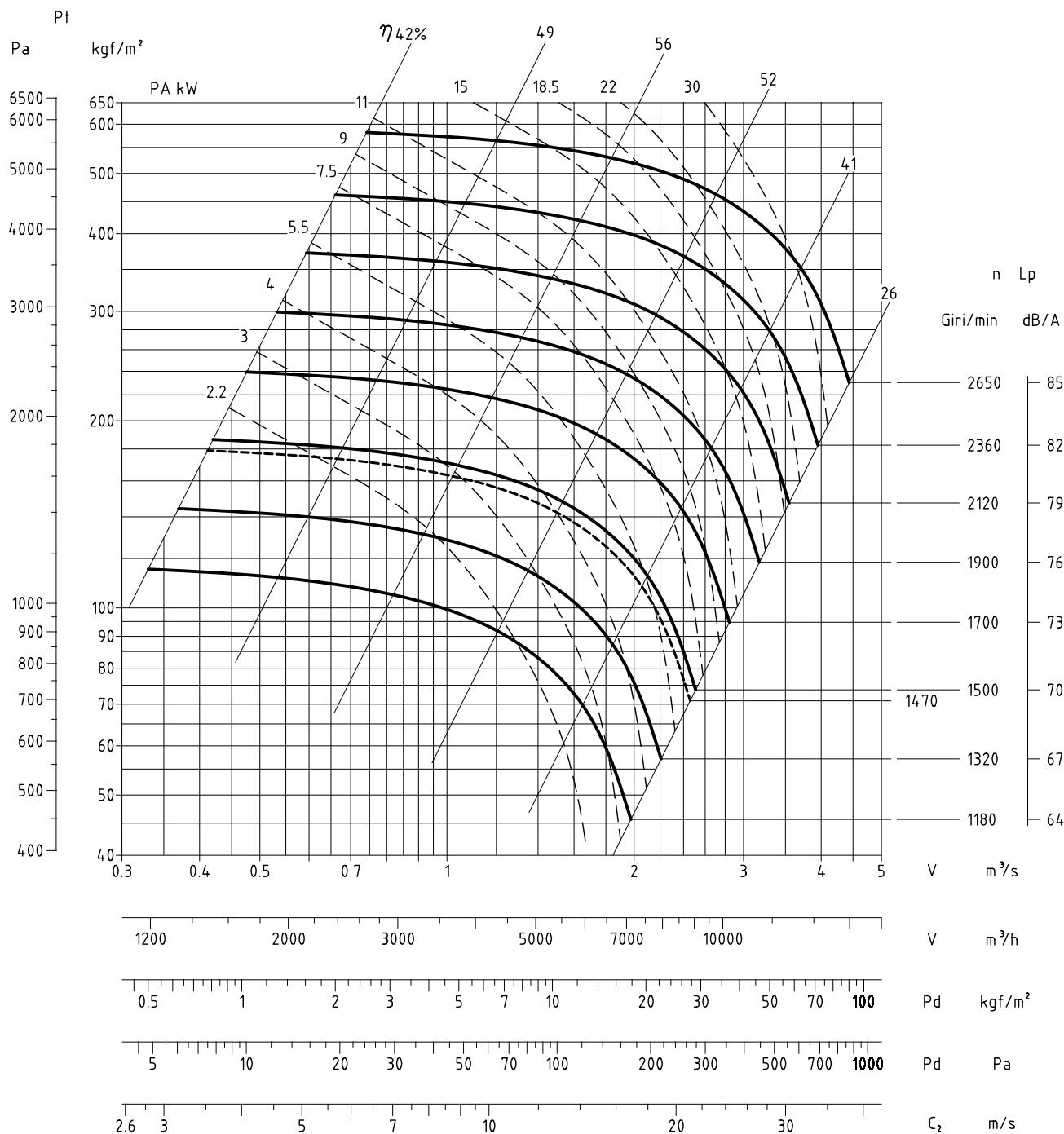
≤ 40°C = 2500 g/min
40 + 60°C = g/min

PD² = 10 kgf.m²
J = 2.5 kg.m²

Densità fluido 1.226 kg/m³



Bocca premente 460X190
Bocca aspirante 350

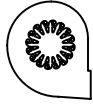


Giri massimi ammissibili

≤ 40°C = 2400 g/min
40 ÷ 60°C = g/min

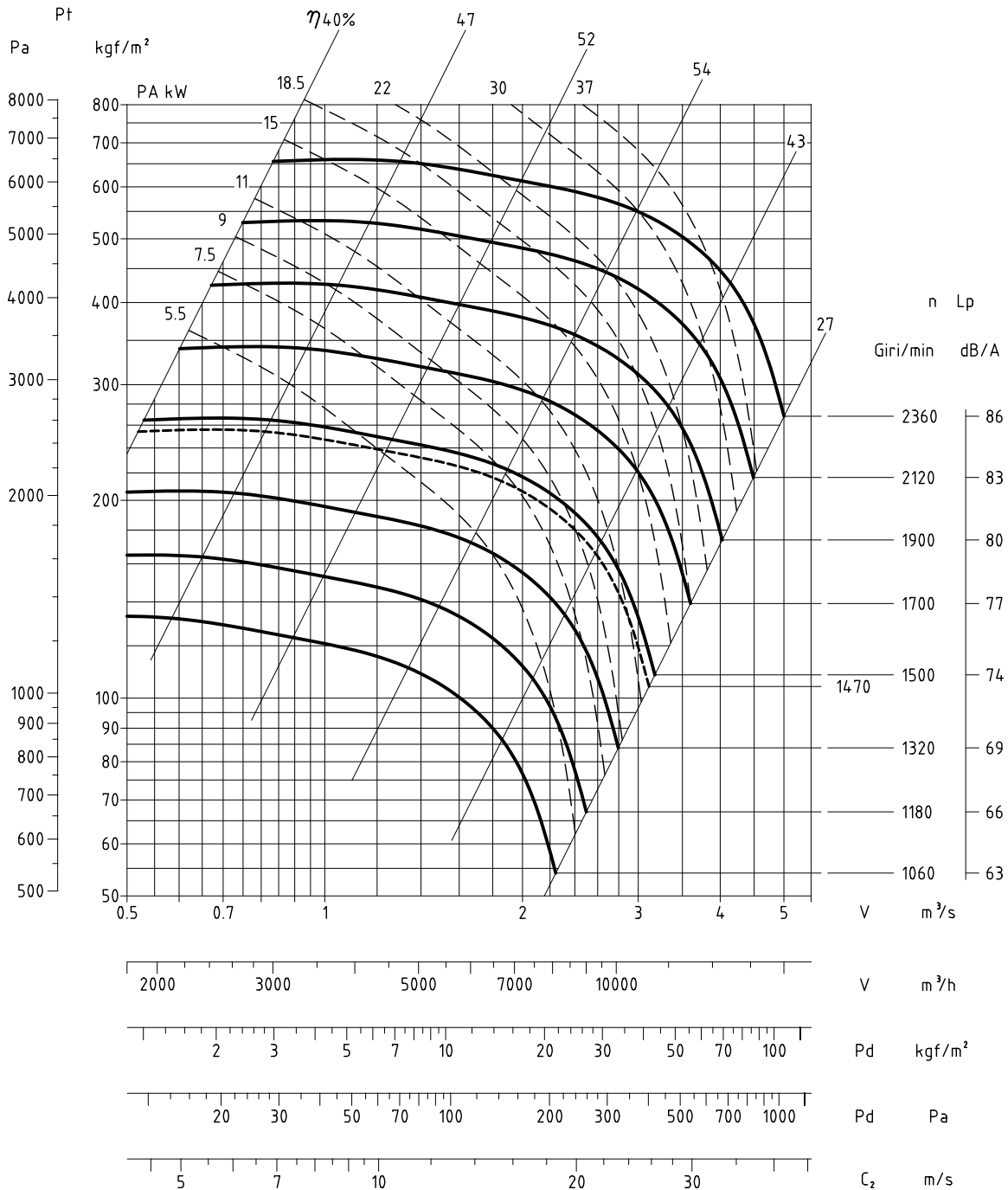
PD² = 10.2 kgf.m²
J = 2.55 kg.m²

Densità fluido 1.226 kg/m³



Bocca premente
Bocca aspirante

540X220
400

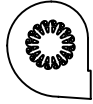


Giri massimi ammissibili

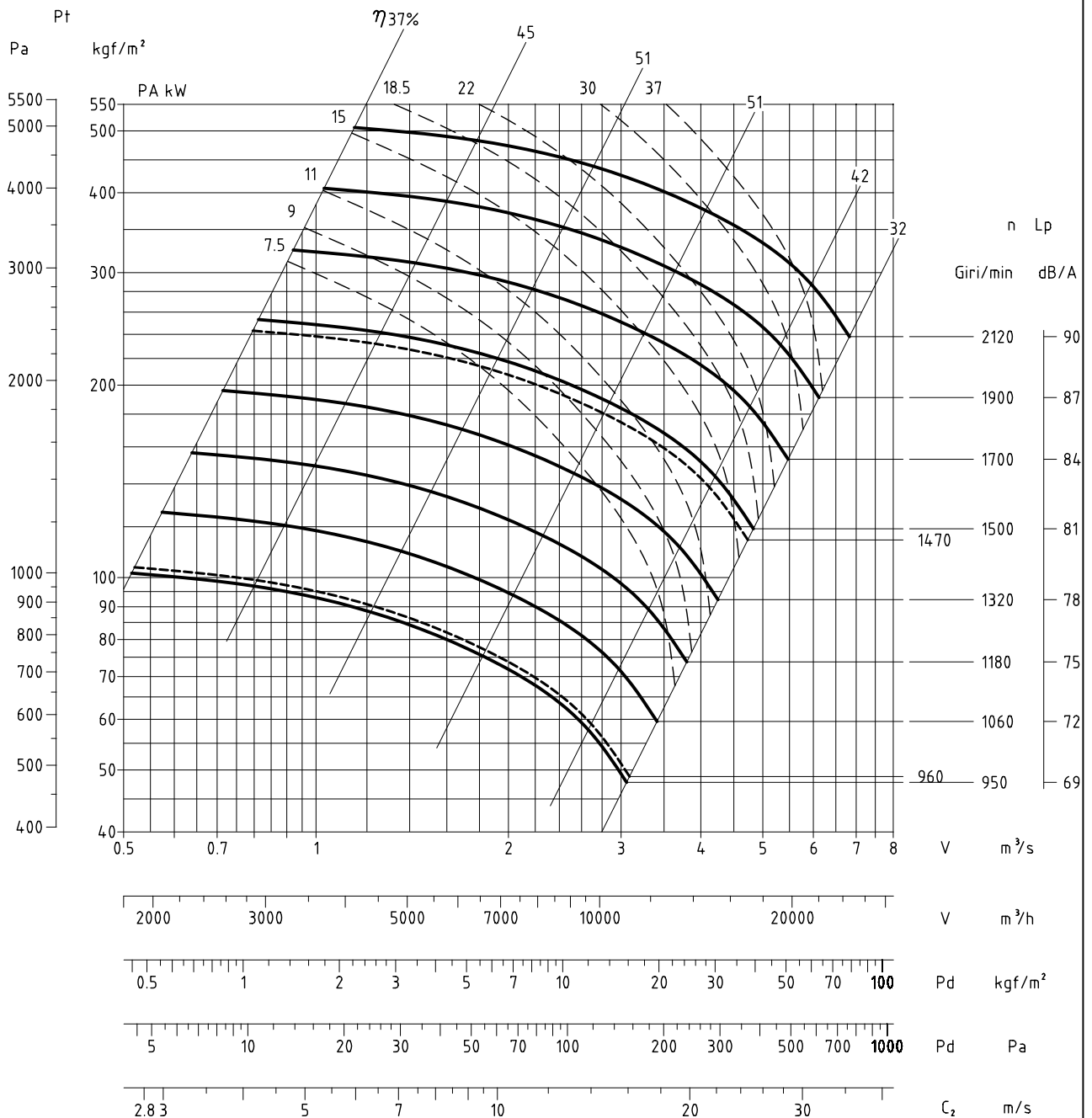
≤ 40°C = 2300 g/min
40 ÷ 60°C = g/min

PD² = 18 kgf.m²
J = 4.5 kg.m²

Densità fluido 1.226 kg/m³



Bocca premente 620X310
Bocca aspirante 450



Giri massimi ammissibili

≤ 40°C = 2100 g/min
40 ÷ 60°C = g/min

PD² = 22.3 kgf.m²
J = 5.6 kg.m²

Densità fluido 1.226 kg/m³