

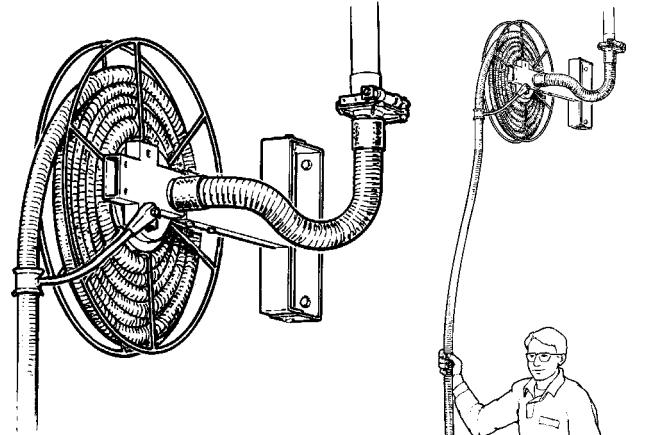
# Hose Reel

## Part No. 7305 Hose Reel 38 mm, complete

The Dustcontrol hose reel for 38 mm hose can be used with all available 38 mm accessories.

The hose reel mechanism is equipped with a latch mechanism allowing the user to take out as much hose as required and then retracting it onto the reel for storage. Vacuum through the reel is controlled by a combination of pneumatic switch and automatic shutter valve. Vacuum is automatically supplied when the hose is withdrawn from the reel.

The hose reel is supplied with an articulating mounting bracket.



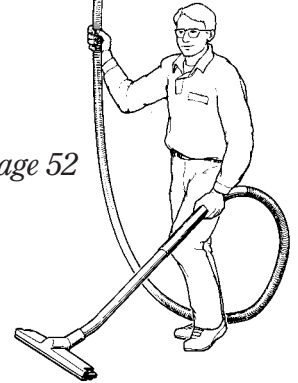
*Suction hoses - please see page 52*

TECHNICAL DATA	
Max. hose length	8 m
Connection diameter	Ø50
Copressed air supply	min 5 bar (75 psi)

# Cutter 108

## Part No. 7357

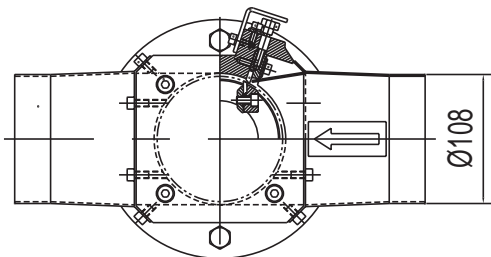
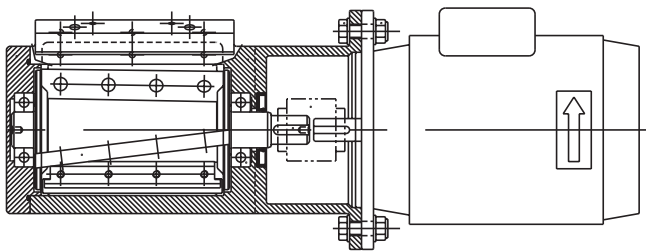
Cutter 108 has been developed for cutting plastic, paper and cardboardstrips and similar materials. The unit is connected to a f108 tubing system and will cut all material in the transport flow into 2-15 cm sized pieces. A rotor with three knives work against one stationary knife.



The knives should be serviced at least twice a year at normal operation 8 hours a day. Depending on amount and type of material the knives should be sharpened and adjusted (500 - 5000 operation hours).

Since sharpening the knives requires a specialist technique and equipment we recommend that the rotor is exchanged or that a spare rotor is obtained and that the worn rotor is sent to us for sharpening or exchange. In cases of high demand for production accessibility we recommend the plant to keep a complete spare Cutter 108.

The tubing system before and after the Cutter should consist of straight pipes. Because of safety reasons the inlet and outlet pipes should each be at least one metre long. At installation and service the safety considerations should allways be followed.



## Exchange rotor Cutter 108 Part No. 40677

TECHNICAL DATA		
Weight	24 kg	
In-/outlet	Ø108	
Motor power	0.75 kW	
Rotation speed	<b>50 Hz</b> 2800 rpm	<b>60 Hz</b> 3400 rpm
Voltage	220-240/ 360-415	254-277/ 440-480