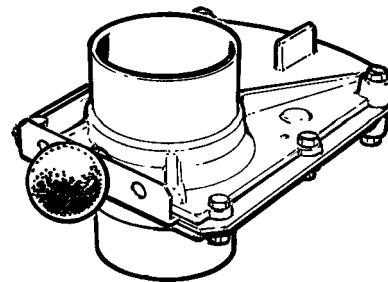


Manual Shutter Valves

Manual shutter valves are used for stationary machine connection or in cases where a permanent hose connection is desired. The valve is opened by drawing the shutter out manually.

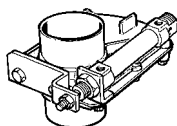
On systems with on demand start-stop, the shutter valve should be equipped with a micro-switch. This will give a start-stop signal for vacuum producer control.

D	control	Part No.
φ50 mm	—	805201
φ50 mm	micro-switch	809101
φ76 mm	—	804300
φ76 mm	micro-switch	809200
φ108 mm	—	808300
φ160 mm	—	8254
φ200 mm*/	—	8017
φ250 mm*/	—	8016



Manual Shutter Valve

*/ Note! Shutter Valve φ200 och φ250 only for clean air.



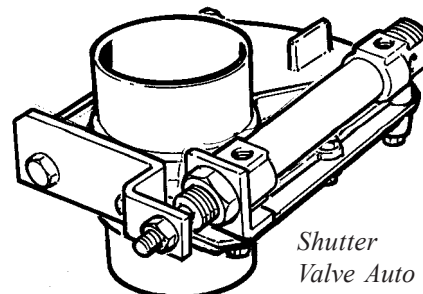
Part No. 8456
Manual Shutter Valve φ50 with micro-switch and attached lead

Shutter Valve Auto

The shutter valve has a stainless steel gate. The gate is driven by a pneumatic cylinder. For applications on work stations and in the tubing system.

With intermittent start-stop, a pressure switch is installed using a "T" fitting in the compressed air supply. This provides an electrical start-stop signal to the vacuum producer.

D	Part No.
φ50 mm	805308
φ76 mm	804408
φ108 mm	808404
φ160 mm	825404
φ200 mm*/	807500
φ250 mm*/	807800



Shutter Valve Auto

*/ Note! Shutter Valve φ200 och φ250 only for clean air.

Electrical Shutter Valve

When a shutter needs to be electrically controlled, use an automatic shutter valve, as above, in combination with a solenoid valve as shown here.

Solenoid Valve Part No.	V
8088	24 V AC
8054	230 V
8026	24 V DC

Electrically driven shutter valves can be built for special applications. Note that the speed of the gate will be much slower for an electrical shutter than for a standard shutter.

Accessories Shutter Valve Auto and EI



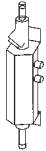
Part No. 8047 Pressure Switch
Installed on pneumatic cylinders to supply electrical signals for start-stop control of vacuum producer.



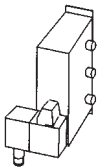
Part No. 8152 T Fitting
Required for installation of the 8047 Pressure Switch



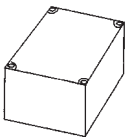
Part No. 8040 Manual Switch
For manual actuation of auto shutters.



Part No. 8030 Flow Valve
Actuates an auto shutter when installed in compressed air supply to a pneumatic tool. Controls on demand extraction.



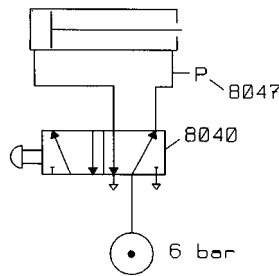
Part No. 8054 Solenoid 230 V AC
Part No. 8088 Solenoid 24 V AC 50/60 Hz
A separate solenoid is used for example, on stationary machines and in connection with a manual switch. The solenoid is connected pneumatically to the auto shutter. Generally installed in control panel of the subject machine.



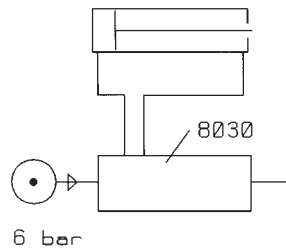
Part No. 8196 Auto-start 230 vac
Auto-start control is used for on demand extraction for electric tools (max 8 amps on subject tool). The auto-start current sensor closes a relay to give solenoid actuation of an auto shutter.

Connection Schematic

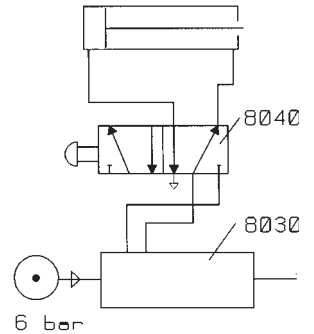
Manual, intermittent start/stop



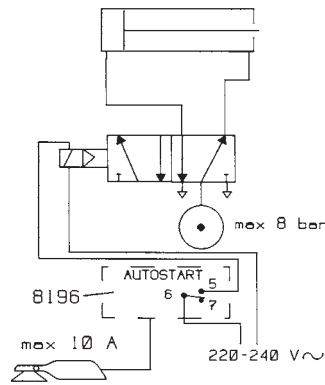
Pneumatic Tool



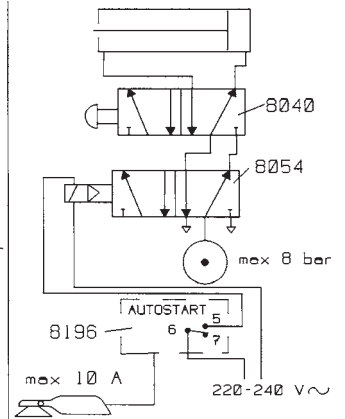
Pneumatic Tool + man



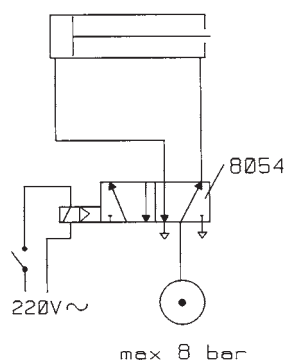
Electric Tool



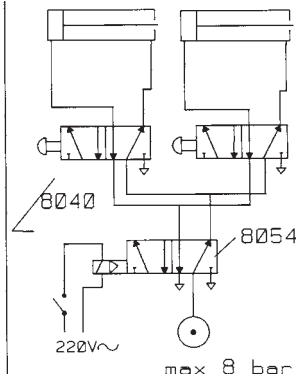
Electric Tool + man



Stationary Machine



Stationary Machine, 2



Cont Accessories next page