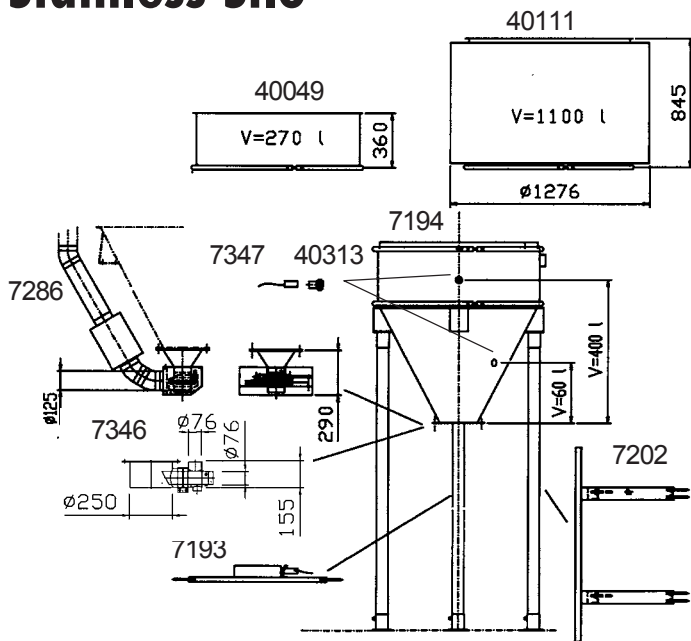
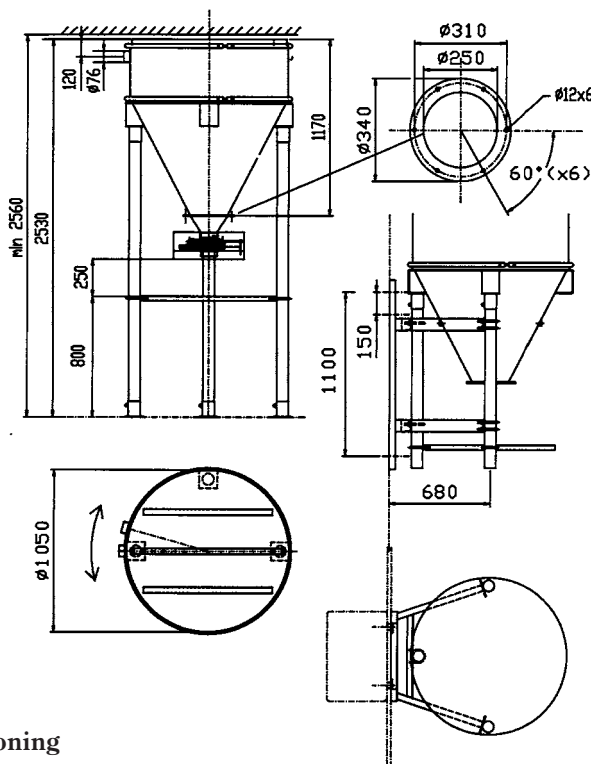


Stainless Silo



Dimensions, Installation Examples



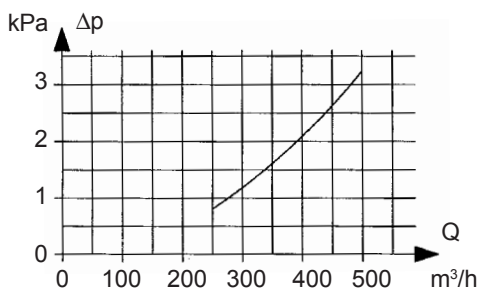
Part No. 7194 Stainless Silo

This stainless (304) steel silo can be used as a pre-separator for material as well as a portioning delivery system in a process. By connecting a stainless (304) steel floor funnel, see p. 50, for loading material into the silo, a pneumatic material transport system can be constructed. The silo can be used also for intermediate storage by installing an ejector for material discharge. This silo should always be equipped with a portioning unit, ejector or some other type of discharge arrangement. The unit is equipped at delivery with sensor mounts for high and low level sensor installation. All surfaces that contact collected material are constructed of stainless (304) steel. **Note: only materials which will flow freely from the cone can be used in the Silo.**

TECHNICAL DATA

Inlet mm	ø76
Outlet mm	ø76
Air Flow m ³ /h	250-500
Body dia. mm	ø1050

Pressure Loss



Accessories

Part No. 7286 Portioning Dispenser

Installed on the silos bottom cone. Dispensing occurs through an automatic shutter valve with solenoid actuation. Note that the silo must not be under vacuum when material is to be dispensed. The dispensing shutter is an aluminum bodied valve and is mounted in a special stainless suction hood with a 125 mm connection (Q = 100 – 350 m³/h @ 25 – 270 Pa, depending upon extraction efficiency required versus noise level). Silencer and spiral tube fittings are delivered with the unit.

Part No. 7346 Ejector for Silo, stainless (304) steel

Installed on the silos bottom cone. Used when stored material is to be transported further from an intermediate silo to some further point. The ejector must be equipped with a 50 mm automatic shutter valve for introduction of transport air and a suitable shutter valve for installation in the transport tube (76 mm connection).

Part No. 40313 Level Sensor
PNP type capacitive sensor (24 V DC) – control signal connections must be installed in the system control. A silo for portion dispensing must be equipped with two of these, one for high level and one for low level.

Part No. 7347 Sensor Mount, complete

For installation of level sensor on the silo.

Part No. 7193 Dispensing table
Installed under the silo dispenser on the silo chassis. The table is equipped with guides and receiver present sensor to initiate material dispensing cycle. Control for this sensor must be present in the system control panel (PNP type sensor, 24V DC).

Part No. 40049 Stainless (304) Module Ring H=350 mm, V=270 l, complete

Installed to increase storage capacity of the silo.

Part No. 40111 Stainless (304) Module Ring H=835 mm, V=1.1 m³, complete

Installed to increase storage capacity of the silo.

Part No. 7202 Wall Mounting, epoxy coated

Used for all installation of the stainless dispensing silo.