

F 20000

The F 20000 is a modular cyclone separator for larger systems. The unit must be equipped with the appropriate inlet module and discharge arrangement, i.e.: discharge cone or alternative selection from pages 28 – 31.

| Part No. | Description |
|----------|--------------------------|
| 7185 | F 20000 Complete |
| 4706 | Discharge Cone |
| 4714 | Collection Sack, 50 pack |

Accessories

Part No. 40187 Pressure Relief Module

Used in applications with explosible dusts. The module is equipped with a pressure relief port to relieve the pressure wave in a deflagration. The relief port must relieve to atmosphere in accordance with the prevailing local standards. This module replaces the normal body module. The separator must discharge to closed container, see page 31.

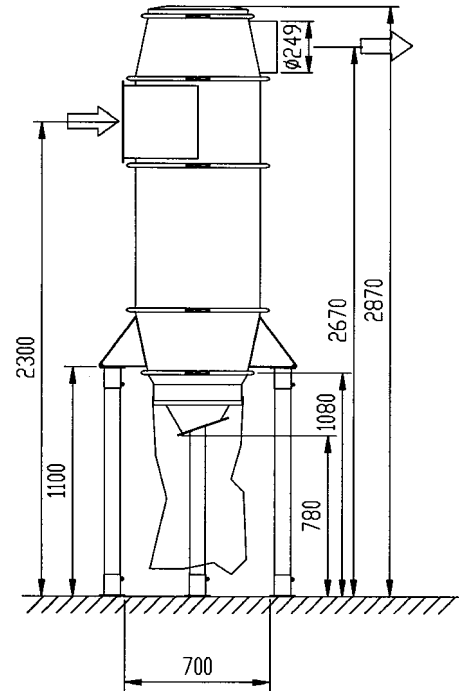
Part No. 7189 Vortex Tube
Used in applications with light dust, i.e.: paper, to increase separation efficiency of the separator.

Part No. 7195 Widening Chassis
For applications where material is to be discharged into a larger receiver such as a tipping container. For leg lengths greater than 1400 mm, order part no. 3004 steel tube. Installation examples on pg. 29.

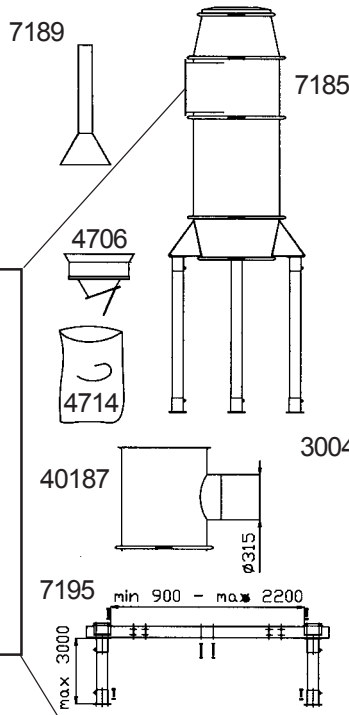
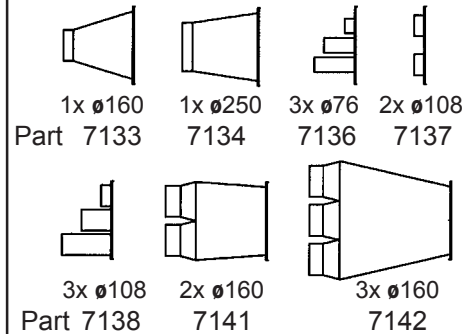
Part No. 3004 Steel Tube 76 mm, galvanised

Ordered by the meter and delivered in 3 m lengths. Used when leg length required is greater than the 1400 mm legs delivered with the unit.

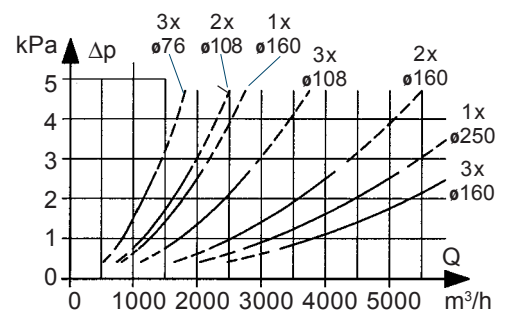
Dimensions , Installation Example



Inlet Modules



Pressure Loss F20000 and F30000



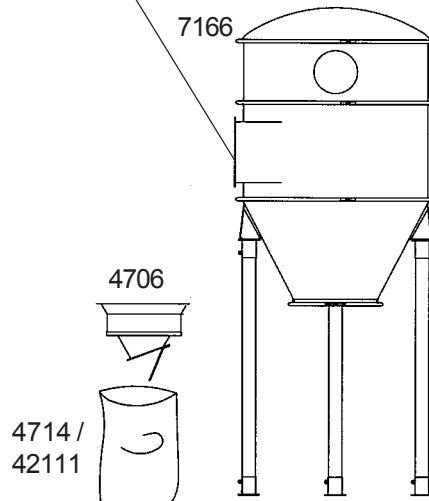
The solid line represents the recommended flow for respective inlets.

F 30000

The F 30000 is a modular cyclone separator for large systems. The configuration of the separator is easily tailored to the specific application. The unit must be equipped with the appropriate inlet module and discharge arrangement, i.e.: discharge cone or alternative selection from pages 28 – 31.

| Part No. | Description |
|----------|-------------------------------------|
| 7166 | F 30000 Complete |
| 4706 | Discharge Cone |
| 4714 | Collection Sack, 50 pack |
| 42111 | Collection Sack, 50 pack Antistatic |

Accessories and dimensions, see next page.



TECHNICAL DATA

| | F 20000 | F 30000 |
|------------|----------------------|-----------------------|
| Weight, kg | ca 120 | ca 170 |
| Inlet, mm | optional | optional |
| Outlet, mm | $\varnothing 250$ | $\varnothing 250$ |
| Flow, m³/h | 1000-4000 | 2000-5000 |
| Body dia. | $\varnothing 596$ mm | $\varnothing 1045$ mm |