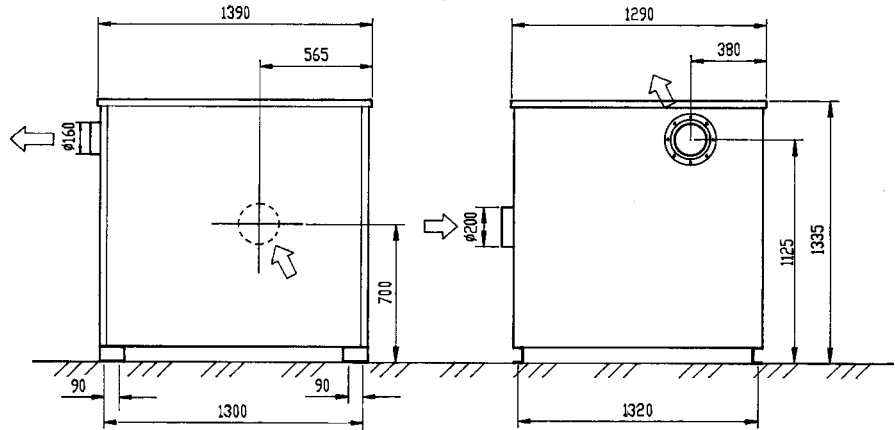


RAF 2501

Dimensions, Arrangements

RAF 2501, RAF 2503

V	Hz	Motor	Part No
400	50	30 kW	112200
230	50	30 kW	112202
460 USA	60	45 HP	112205
575	60	40 HP	112206
460 CAN	60	40 HP	112207



The RAF 2501 is applied in extraction systems requiring large air-flows for lighter types of dust and cleaning. Pressure generation is achieved through two series connected stages. The unit is equipped with vibration isolation and a silenced enclosure. The unit should always be equipped with an exhaust silencer (inlet also if required). The unit is direct driven and has minimal service requirements (lubrication interval 10000 hours).

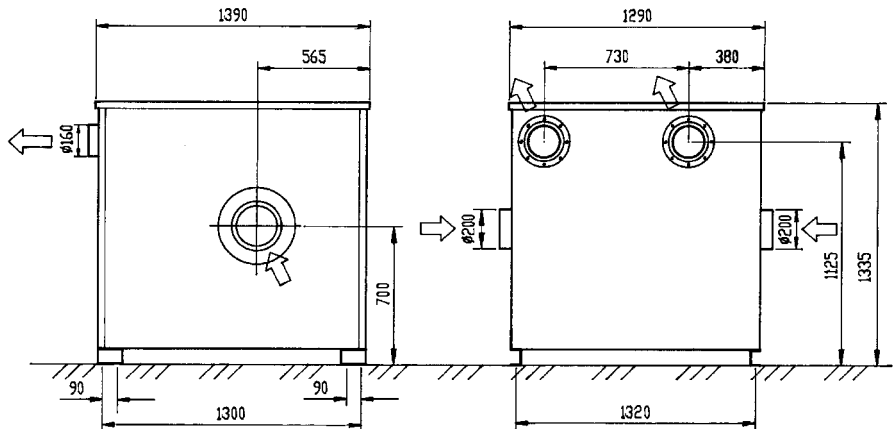
Accessories

Part No. 8051 Back Flow Valve
160 mm

Installed on the inlet side of the fan when two or more units are parallel installed. For complimentary tubing details, see pages 36 – 40.

Silencers see page 15.

RAF 2502



RAF 2502

V	Hz	Motor	Part No.
400	50	30 kW	112300
230	50	30 kW	112302
460 USA	60	45 HP	112304
575	60	40 HP	112306
460 CAN	60	40 HP	112307

The RAF 2502 is applied in extraction systems requiring large air-flows such as systems for fume extraction. RAF 2502 work with two parallel impellers. The unit is equipped with vibration isolation and a silenced enclosure. The unit should always be equipped with an exhaust silencer (inlet also if required). The unit is direct driven and has minimal service requirements (lubrication interval 10000 hours).

Accessories

Silencers see page 15.

RAF 2503

V	Hz	kW	Part No.
380-420	50	30	112400

Pressure generation is achieved through two series connected stages. The unit is equipped with vibration isolation and a silenced enclosure. The unit should always be equipped with an exhaust silencer (inlet also if

required). The unit is direct driven and has minimal service requirements (lubrication interval 10000 hours). RAF 2503 develops a maximum negative pressure of 20 kPa. Note though that the maximum airflow is 2800 m³/h. Above this, the power consumption would be too large for the 30 kW motor, so the design of the system must throttle to this level for all cases.

Accessories - Please see RAF 2501.

	TECHNICAL DATA					
	RAF 2501		RAF 2502		RAF 2503	
	50Hz	60Hz	50Hz	60Hz	50 Hz	
Pump RPM	rpm	3000	3600	3000	3600	3000
Weight ca	kg	440		430		450
Max dp	kPa	17		9.4		20
Max Q	m ³ /h	3300		6200		2800
Sound Level* dB(A)		74		74		74
Inlet/Outlet	mm	200/160		2x200/2x160		200/160

* with exhaust silencer, 1 m.